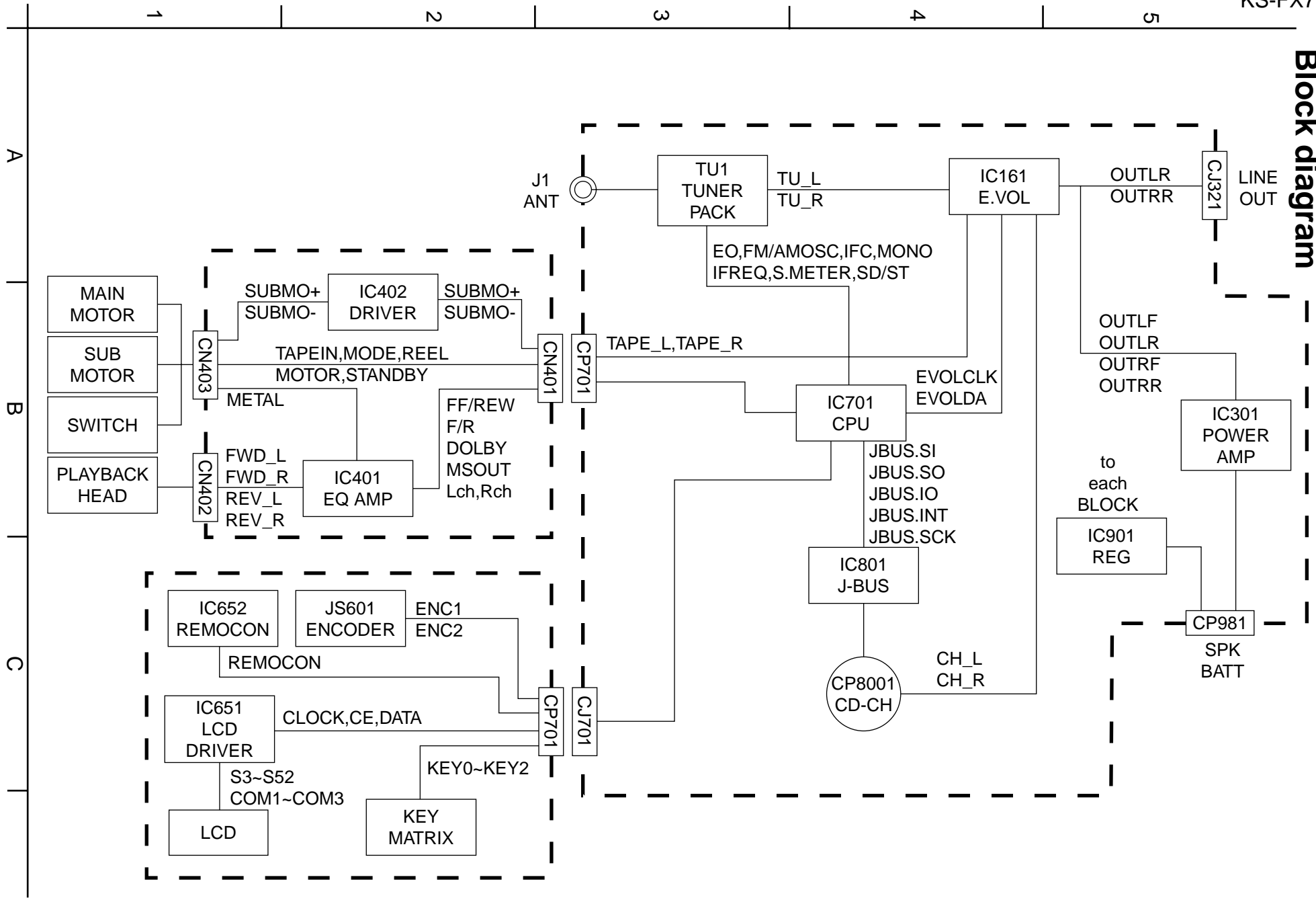


Block diagram



< MEMO >

Standard schematic diagrams

■ Main amp section

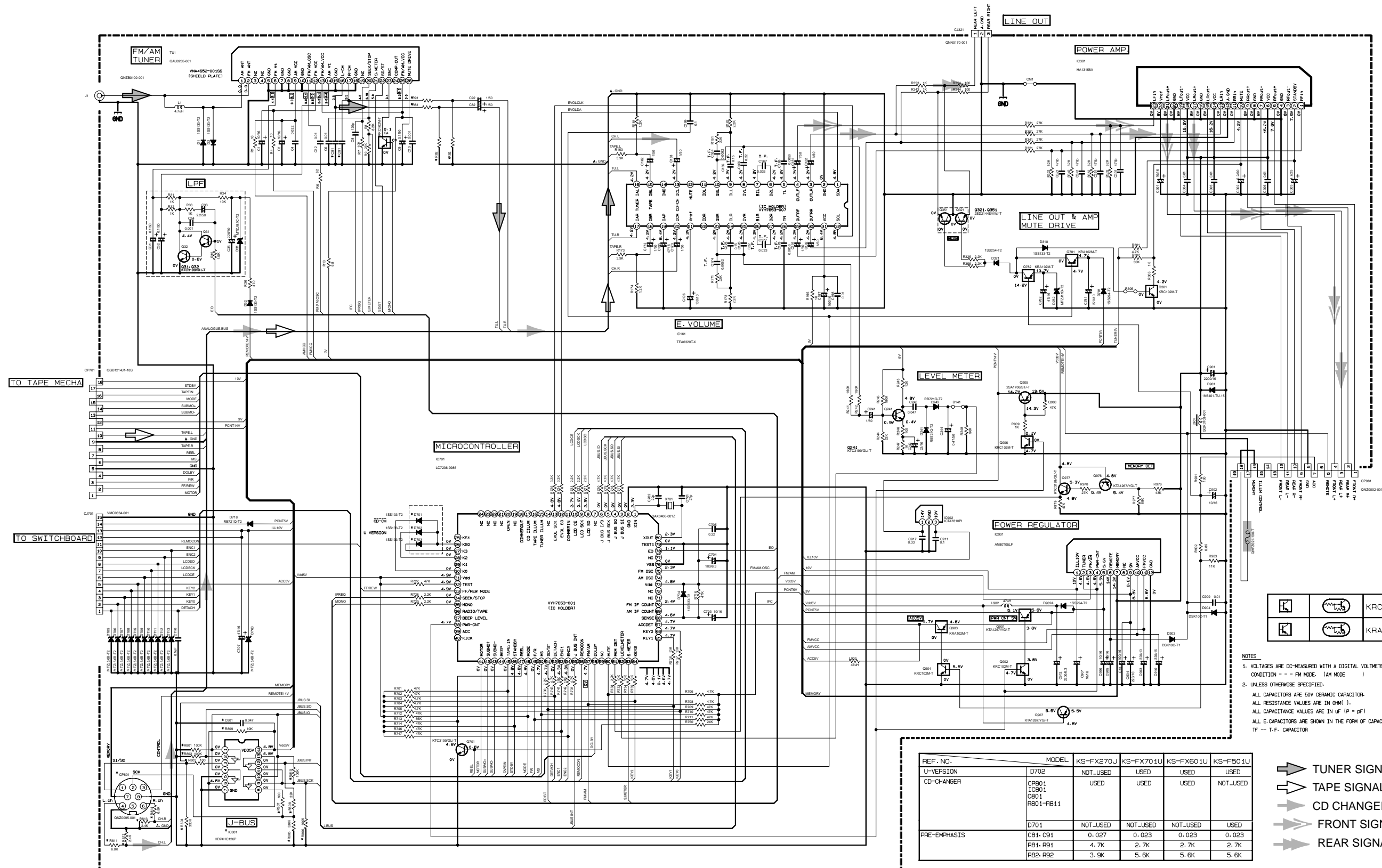
5

4

3

2

1



	KRC102M-T
	KRA102M-T

- NOTES**
- VOLTAGES ARE DC-MEASURED WITH A DIGITAL VOLT-METER WITHOUT INPUT SIGNAL. CONDITION --- FM MODE. (AM MODE)
 - UNLESS OTHERWISE SPECIFIED: ALL CAPACITORS ARE 50V CERAMIC CAPACITOR. ALL RESISTANCE VALUES ARE IN OHM (Ω). ALL CAPACITANCE VALUES ARE IN UF (pF) ALL E-CAPACITORS ARE SHOWN IN THE FORM OF CAPACITANCE (uF) / RATED VOLTAGE TF --- T.F. CAPACITOR

REF. NO.	MODEL	KS-FX270J	KS-FX701U	KS-FX601U	KS-F501U
U-VERSION	D702	NOT_USED	USED	USED	USED
CD-CHANGER	CP801 IC801 CB01 RB01-RB11	NOT_USED	USED	USED	NOT_USED
	D701	NOT_USED	NOT_USED	NOT_USED	USED
PRE-EMPHASIS	CB1, C91	0.027	0.023	0.023	0.023
	RB1, R91	4.7K	2.7K	2.7K	2.7K
	RB2, R92	3.9K	5.6K	5.6K	5.6K

- TUNER SIGNAL
- TAPE SIGNAL
- CD CHANGER SIGNAL
- FRONT SIGNAL
- REAR SIGNAL

Parts are safety assurance parts. When replacing those parts make sure to use the specified one.

A

B

C

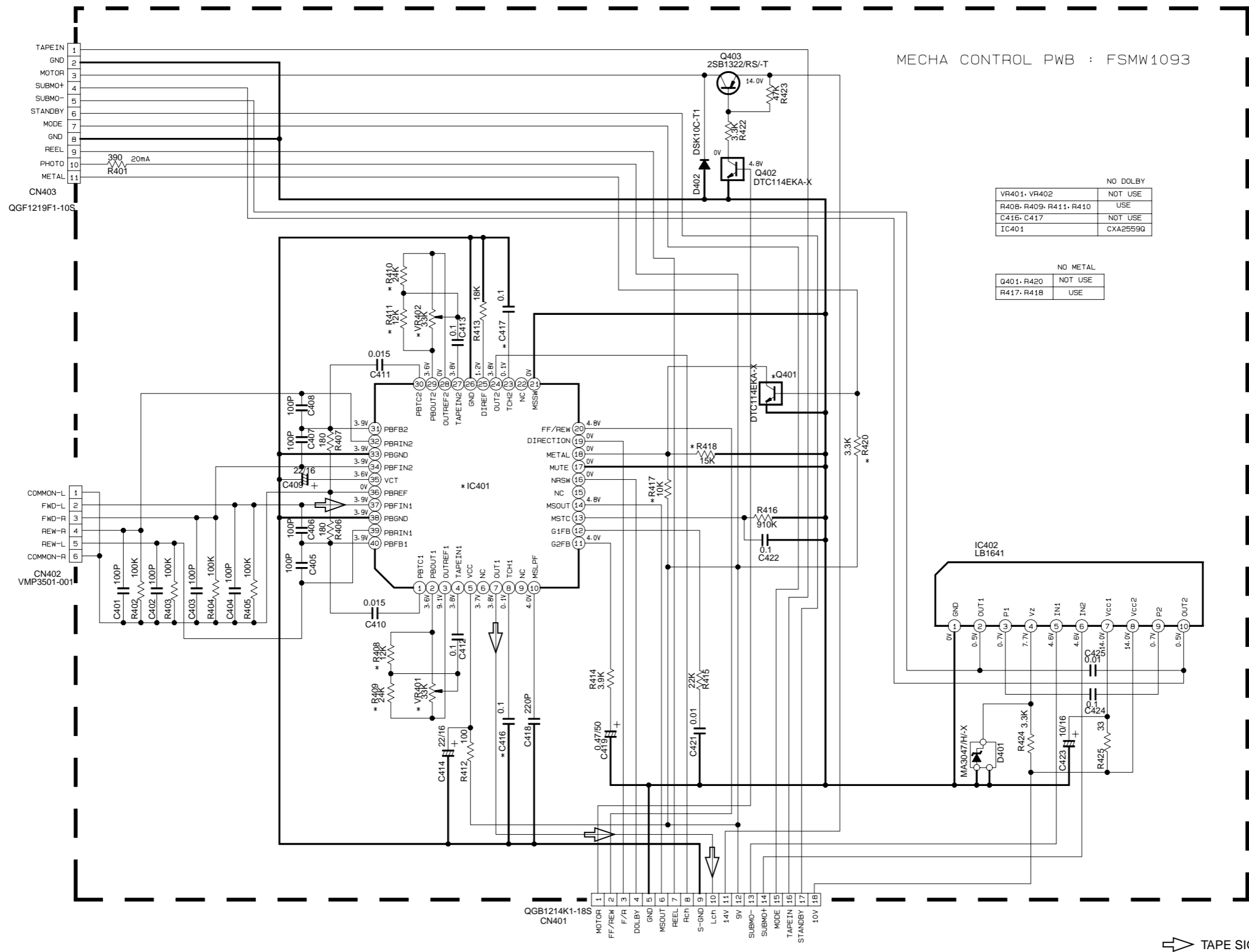
D

E

F

G

■ Mechanism control section



MECHA CONTROL PWB : FSMW1093

NO DOLBY	
VR401, VR402	NOT USE
R408, R409, R411, R410	USE
C416, C417	NOT USE
IC401	CXA2559G

NO METAL	
G401, R420	NOT USE
R417, R418	USE

⇨ TAPE SIGNAL

5

4

3

2

1

A

B

C

2-4

D

E

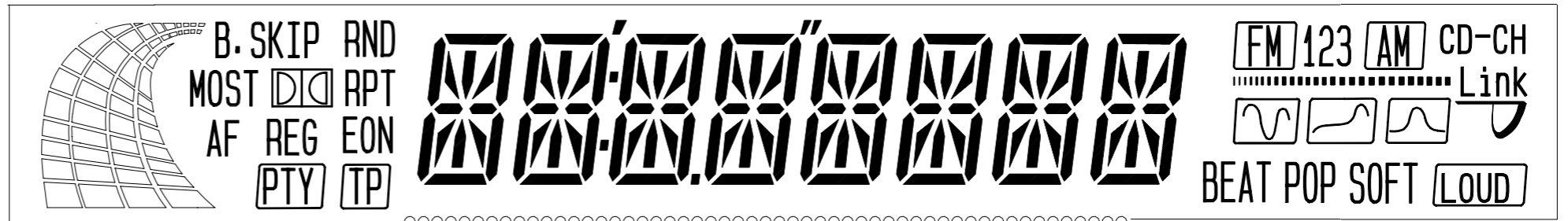
F

G

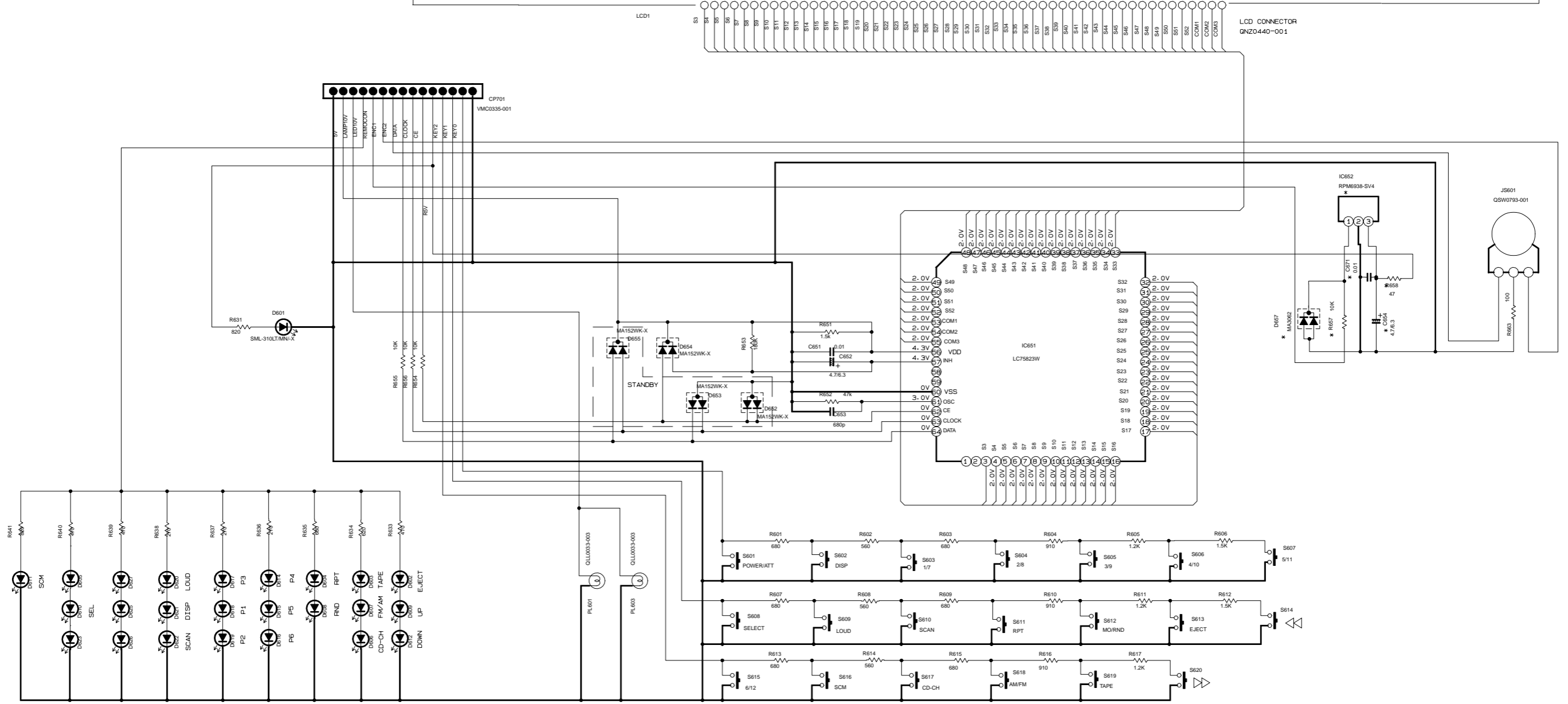
H

■ LCD & Key control section

- NOTES**
1. VOLTAGES ARE DC-MEASURED WITH A DIGITAL VOLT METER WITHOUT INPUT SIGNAL.
CONDITION - - - FM MODE
 2. UNLESS OTHERWISE SPECIFIED:
ALL RESISTORS ARE 1/4W 5% CARBON RESISTOR OR 1/4W 1/10W 5% METAL GLAZE RESISTOR.
ALL CAPACITORS ARE 50V CERAMIC CAPACITOR.
ALL RESISTANCE VALUES ARE IN OHM(Ω).
ALL CAPACITANCE VALUES ARE IN μF(P=pF).
ALL E-CAPACITORS ARE SHOWN IN THE FORM OF CAPACITANCE(μF) / RATED VOLTAGE(V).



5
4
3
2
1



D602-D627 LNJ309G61/1-3/X
EXCEPT D611 : SML-310DT/KL/-X

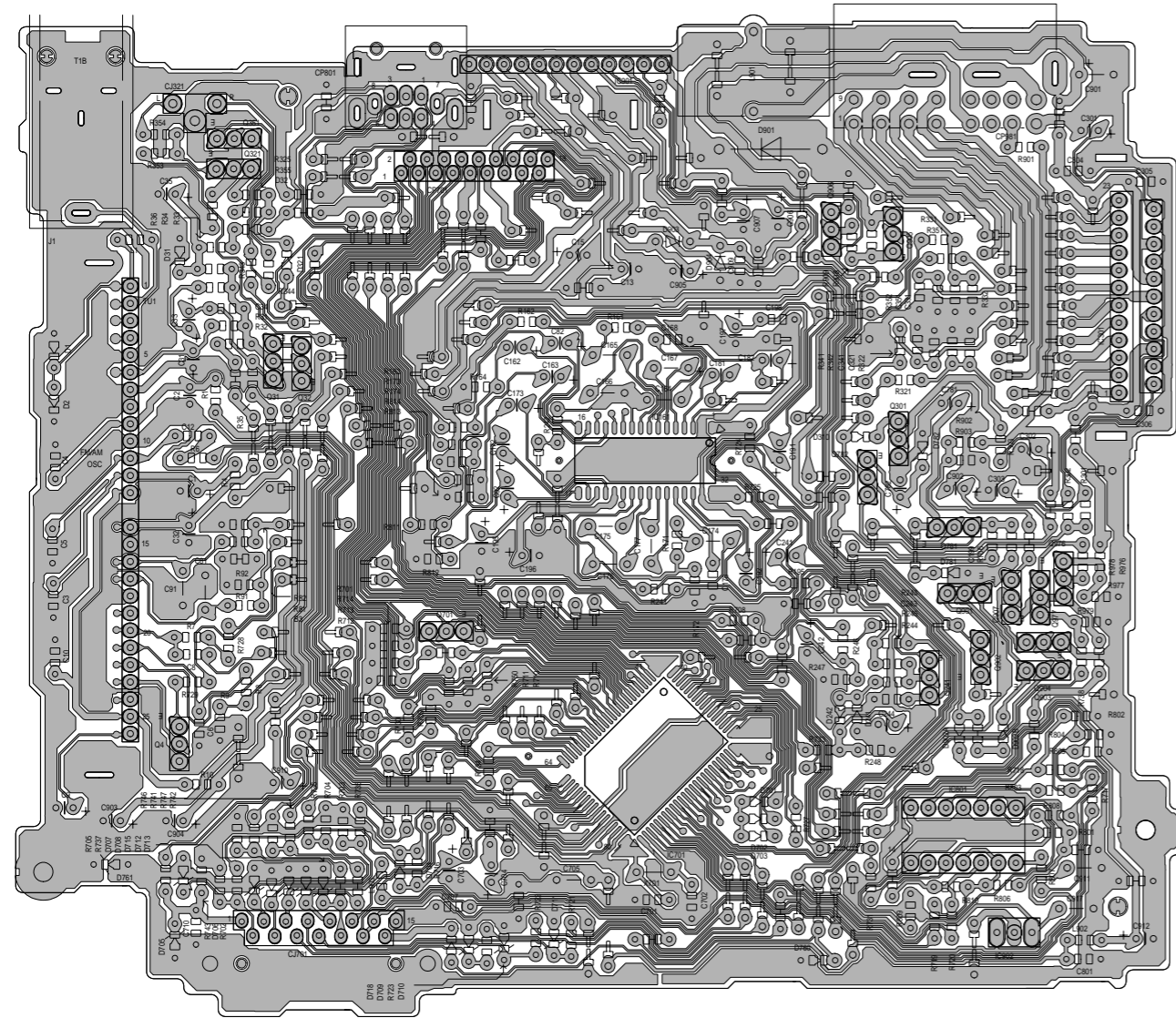
S601-S620 NSW0066-001X

REF. NO.	MODEL	KS-FX270J	KS-FX701U	KS-FX601U	KS-F501U
REMOTE CONTROL	C654 · D657 R657 · R658 IC652	USED	USED	NOT_USED	NOT_USED
LCD1		QLD0156-001		QLD0158-001	

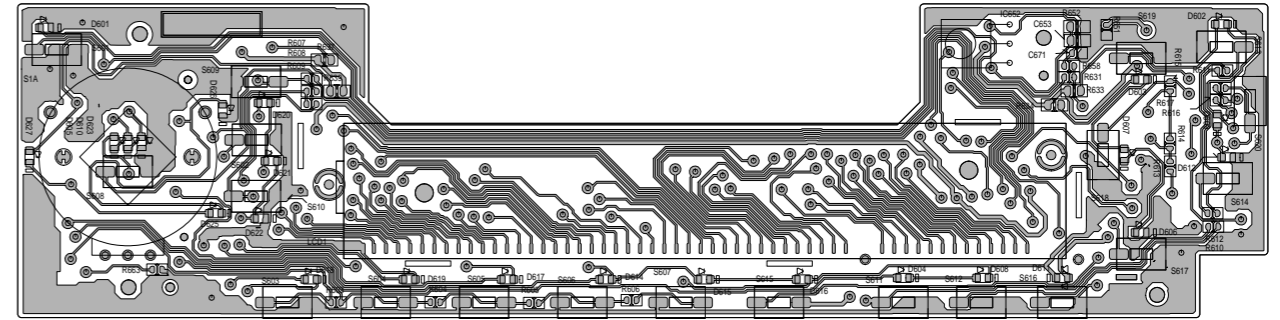
MODEL NAME	SWITCH BOARD
KS-FX270J / KS-FX701U SERIES	KS-SWPCB-1
KS-FX601U SERIES / KS-F501U SERIES	KS-SWPCB-3

Printed circuit boards

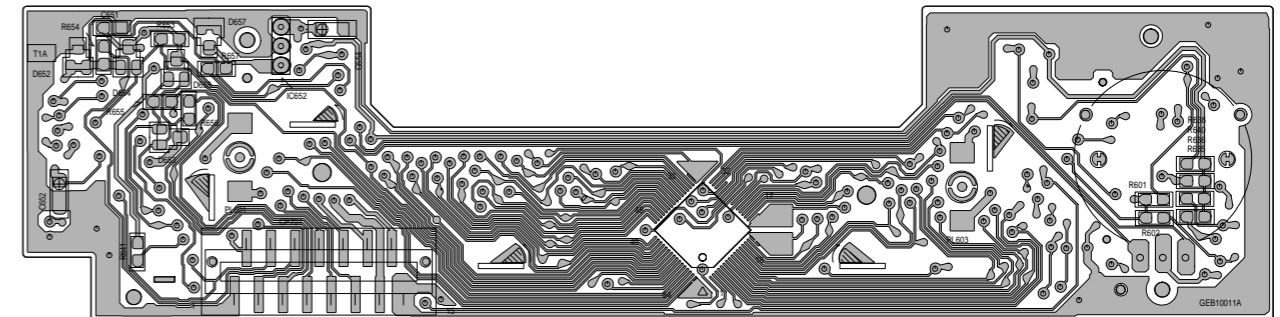
■ Main board



■ Front board (Forward side)

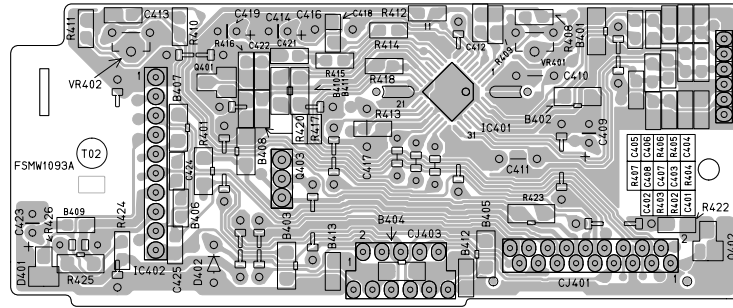


■ Front board (Reverse side)



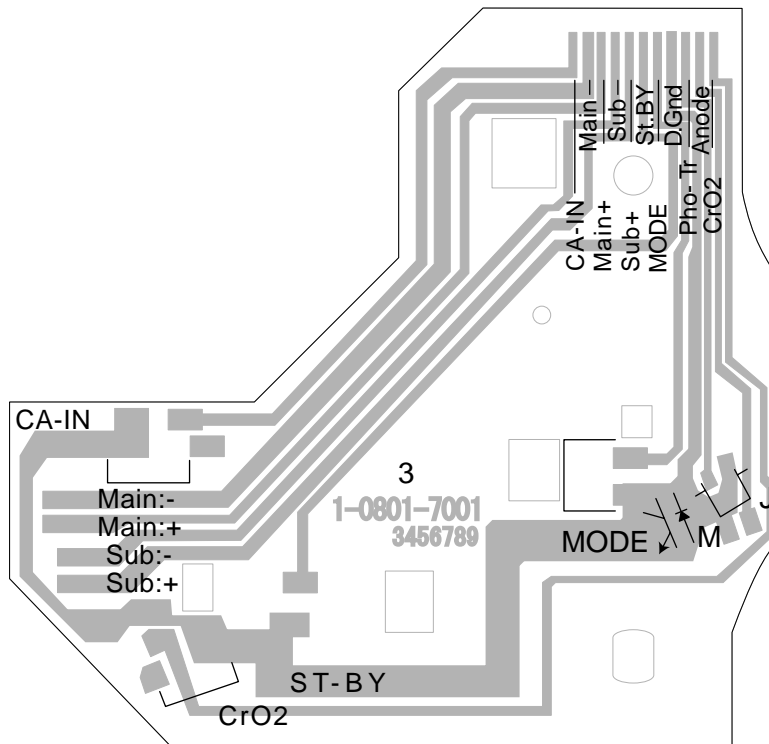
5

■ Mecha control board



4

■ Reel board



3

2

1

A

B

C

2-7